



# 15<sup>th</sup> Annual Angus Female Production Sale

*Saturday, April 9, 2022 • 12 Noon*  
At the farm near Wadley, Georgia

“**Elite**” is an earned designation for a Southern Synergy female. The CAM-Ogeechee focus for the past 15 years has been to use the most sophisticated tools and technology we have to add value to our customers’ cattle and their customers’ cattle. Join us Saturday, April 9. We think you will agree!

## *Selling*

### 138 Registered Females

- 14 Open fall donors
- 20 Fall bred donors
- 6 Spring donor heifers
- 8 Two- and three-year-old bred donors
- 60 Fall bred heifers
- 20 Fall bred cows
- 10 Elite spring yearlings

### 20 Bred Commercial Heifers

**OGEECHEE**  
*Farms*

**CAM** *Ranches*  
ANGUS CATTLE & QUARTER HORSES

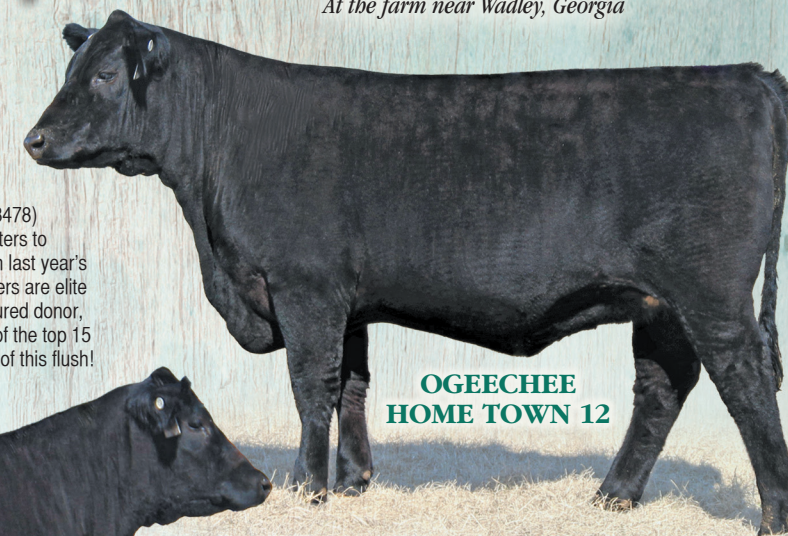


# 15<sup>th</sup> Annual Angus Female Production Sale

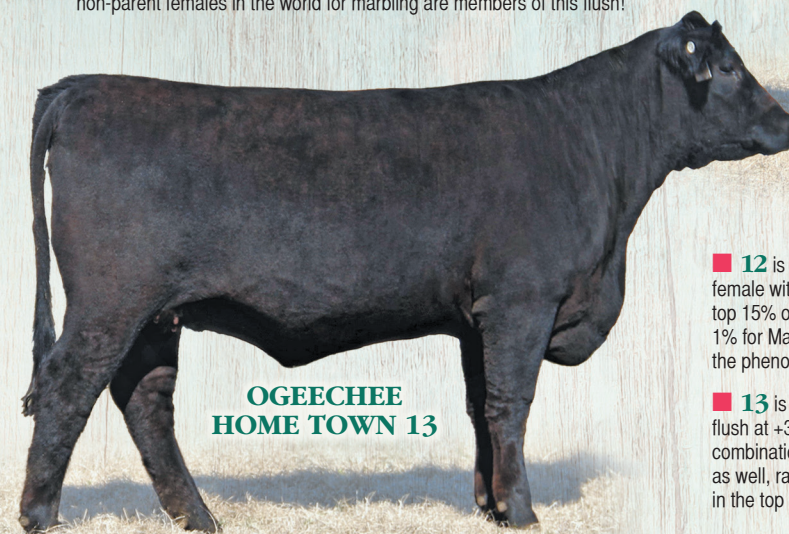
*Saturday, April 9, 2022 • 12 Noon*  
At the farm near Wadley, Georgia

## *Buyer's Choice*

Offering choice of **Ogeechee Home Town 12** (19958478) and **Ogeechee Home Town 13** (19958484). Full sisters to **Ogeechee Home Town 10**, the high selling female in last year's sale selected by Butz-Hill in Iowa for \$120,000. These heifers are elite and out of the famous flush of the TK Angus, \$60,000 featured donor, Ogeechee Momentum 838, and GAR Home Town. Three of the top 15 non-parent females in the world for marbling are members of this flush!



**OGEECHEE  
HOME TOWN 12**



**OGEECHEE  
HOME TOWN 13**

■ **12** is the #5 marbling (+2.13) non-parent female in the breed and the only female with her combination of marbling and calving ease. She ranks in the top 15% of the breed for 14 EPDs and selection indexes, ranking in the top 1% for Marbling, \$G, \$B and \$C. This elite, big footed female also possesses the phenotype every cowman can appreciate.

■ **13** is an elite \$Combined individual in the famous Home Town X 838 flush at +371! She is the only non-parent female in existence with her combination of Marbling, \$M and \$C. She excels for multi trait excellence as well, ranking in the top 15% of the breed for 12 EPDs and indexes and is in the top 1% of the bred for CED, Milk, Marbling, \$G, \$B and \$C.

### Average EPDs/Indexes for the 2022 Southern Synergy Parent Offering

CED	BW	WW	YW	YH	DOC	SC	CW	MARB	RE	\$M	\$G	\$B	\$C
+9	+1.5	+78	+137	+8	+23	+48	+61	+1.19	+96	+60	+80	+187	+302
25%	55%	4%	3%	20%	15%	70%	5%	3%	4%	40%	1%	1%	2%

### Average EPDs/Indexes for the 2022 Southern Synergy Non-Parent Offering

CED	BW	WW	YW	YH	DOC	SC	CW	MARB	RE	\$M	\$G	\$B	\$C
+9	+1.1	+73	+132	+7	+23	+89	+60	+1.32	+1.00	+65	+87	+195	+318
30%	45%	15%	15%	35%	25%	45%	20%	3%	10%	40%	1%	2%	2%

*Go to [SouthernSynergyAngus.com](http://SouthernSynergyAngus.com) for sale updates, videos and the sale book.  
If we can be of any assistance in your genetic improvement, please contact us!*

**FREE DELIVERY** to central locations in the lower 48 states.

**OGEECHEE**  
*Farms*

P.O. Box 820 • Wadley, GA 30477  
Clint Smith: (706) 551-2878 • [ogeechee05@yahoo.com](mailto:ogeechee05@yahoo.com)  
Smitty Lamb: (229) 646-4785 • [smittylamb@hotmail.com](mailto:smittylamb@hotmail.com)  
[www.OgeecheeAngus.com](http://www.OgeecheeAngus.com)

**CCI**  
**LIVE** Watch the sale  
and bid live online  
at CCI.Live

**CAM** *Ranches*  
ANGUS CATTLE & QUARTER HORSES

The Charles & Sandra McPeake Family  
1849 Athens Road • Crawford, GA 30630 • Andrew McPeake: (478) 719-7021  
[andrew\\_mcpeake@hotmail.com](mailto:andrew_mcpeake@hotmail.com) • [www.CAMRanches.com](http://www.CAMRanches.com)



**Ogeechee Home Town 037  
and Ogeechee Home Town 055...**

*Both sell open and ready to flush!*

**Ogeechee Home Town 037** is a POWERFUL Home Town daughter of the \$60,000 Ogeechee Miss Wix 6101 owned by Soaring Eagle in MO that was also a prolific donor at FB Genetics in Texas. 037 combines elite calving ease, rapid early growth, carcass value and maternal function to the highest degree and she is the only non-parent female that meets her criteria for calving ease direct, yearling weight, marbling, ribeye and \$M. She is moderate, wide based, big topped and bold in her forerib. Her full brother was the \$15,000 selection of Select Sires in the 2021 Early Bird Sale at Gardiner Angus Ranch. **She and her sister, Ogeechee Home Town 055 (20070734), sell in their entirety on April 9.**



**OGEECHEE  
HOME TOWN 037**  
(20008184)

*"Top 20 for 20!"*

This tremendous young donor checks a lot of boxes, ranking in the **top 20% of the breed for 20 genetic predictors** and selection indexes! Sired by E W A Peyton 642 out of the Butz-Hill and Big Timber donor, Ogeechee Sunrise 6023, this female is the epitome of the "you can have it all" approach we strive for, as she excels for a multitude of traits of merit. Her full brother just went to work for Select Sires and a maternal brother, GAR Energy (19722410), is the high performing, huge ribeye AI sire currently available on the Grimmus Cattle sire roster.



**OGEECHEE  
PEYTON 038**  
(20008144)

*Full sister to Ogeechee Momentum 838 sells!*

**Ogeechee Momentum 812** (19479632) has been a prolific producer for us. Her extraordinary EPDs and percentile rankings demand attention as, arguably, one of the most genetically versatile Angus females to sell this spring. Top 1% CW, top 2% WW, marbling, ribeye and top 3% YW. Her \$Value indexes are even more impressive. Top 1% \$W, \$F, \$G, \$B, \$C and top 4% for \$M!



**OGEECHEE  
MOMENTUM 838**

**Ogeechee Home Town 041** is the front pasture kind from the Iron Pin Ranch donor, Ogeechee Niagara 717! She is phenotypically stunning, has the balance and eye appeal to produce competitive P&G show heifers, and the genetic potential to produce bulls that sire profitable calves, regardless of end point. Note the double digit CED, truly elite marbling prediction and top 1% ranking for \$B. Her two powerful sisters (20008107 and 20008196) both served as donors this fall as well and all three sisters sell.



**OGEECHEE  
HOME TOWN 041**  
(20008106)



**CAM  
COMBUSTION A060**  
(19960538)

GAR Combustion has earned the reputation for siring true performance cattle with extra eye appeal. If this is the goal for your program, **CAM Combustion A060** should be one to watch on sale day as she truly possesses elite genetic predictions for the traits of merit (not to mention her -1.66 PAP, top 3%) and has stop-in-your-tracks good looks.



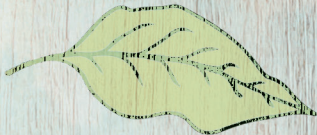
Generated from the first flush of the \$25,000 GMC donor, CAM 100X A7004, and the most heavily used bull in the Angus breed GAR Hometown, **CAM Home Town A035** and her flushmates check every measurable box to be donors in our herd. So far, the flush has generated \$95,000 in progeny sales on four head including the private treaty acquisition of CAM Home Town A066 by Peak Genetics, Shawano, WI, and the Lot 1 bull in GAR's fall bull sale selling to FB Genetics, Dumas, TX. A035 and her remaining 4 sisters have all been flushed (A020, A023, A032, and A067) and will all sell on April 9.



**CAM  
100X A7004**  
(dam of A035)



**CAM  
HOME TOWN  
A035** (19974627)



With 16 EPDs in the top 10% of the breed or better, **CAM Prophet K263 T389** represents exactly how we strive to breed cattle for balance. Out of the prominent ST donor, GAR Sure Fire A5008, the dam of GAR Greater Good, and the Birdwell herd sire GAR Prophet K263, T389 is one of six non-parent females in the breed with the same sire that achieve this level of genetic superiority for carcass merit and maternal ability. T389 is a full sister to the \$34,000 Johnson Family Farm acquisition, CAM Prophet K263 T79, through last year's sale.



**GAR Sure  
Fire A5008**  
(dam of T389)



**CAM PROPHET  
K263 T389**  
(20030102)



**CAM OAF Combustion A011** represents the first generation from the Ogeechee/CAM partnership donor GAR Ashland N888 who also sells in this same event. A011 has curve-bending potential written all over her with double-digit CED to go along with breed leading growth and top 1% marbling. A011 sells bred on 12/10/2021 to the young Genex standout E&B Wildcat 9402.



**HPCA 65  
EARLY BIRD 210**  
(19732517)



**CAM OAF  
COMBUSTION A011**  
(19960539)

**HPCA 65 Early Bird 210** was the CAM selection from the overwhelmingly successful fall sale at Hinkle's Prime Cut Angus. We received several calls before she ever got here about just how genuinely good she was to look at. When she got off the trailer we agreed. 210 represents a pedigree with added mating flexibility (Early Bird 65 x Niagara), calving ease, growth, and a boatload of marbling. In an effort to always offer our very best, we are selling half-interest in this striking female.

